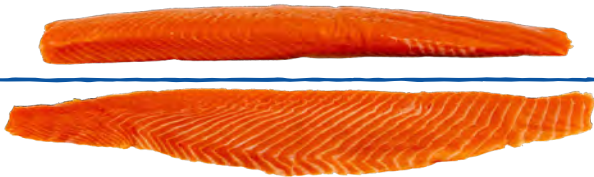


NORWEGIAN SALMON SASHIMI



SASHIMI LOINS, TRIM E & TRIM D FILLETS

Storm Seafood sashimi loins are selected for premium color, texture and purity. Perfect for raw or lightly seared applications including a variety of sushi preparations.



PRODUCT PACKAGING



CONTACT US

300 FRANK W. BURR BLVD., TEANECK, NJ 07666
 SALES@EASTERNFISH.COM
 1-800-526-9066

ADVANTAGES

- **SASHIMI-GRADE QUALITY**
Processed to meet the highest standards for raw consumption.
- **UNIFORM CUTS**
Trimmed top and bottom loin cuts enhance presentation and consistency.
- **RICH FLAVOR & TEXTURE**
16% - 18% fat content contributes to delectable taste and texture.
- **SUSTAINABLE COMMITMENT**
Sourced from responsibly managed fisheries.
- **CERTIFIED QUALITY**
BRC, ASC, GAP, FDA, HACCP Certified, and Kosher.

ITEM #	DESCRIPTION	PORTION SIZE	PACK SIZE	UNITS PER CASE
98299	ATLANTIC SALMON - NORWEGIAN SASHIMI LOINS	1-2.5 LB	1/11 LB	~7-10 LOINS
98294	ATLANTIC SALMON - NORWEGIAN IVP SL TRIM E FILLET	2/3 LB	1/13 LB	4-6 FILLETS
98295	ATLANTIC SALMON - NORWEGIAN IVP SL TRIM E FILLET	3/4 LB	1/24 LB	6-8 FILLETS
98296	ATLANTIC SALMON - NORWEGIAN IVP SL TRIM E FILLET	4/5 LB	1/24 LB	4-6 FILLETS
98297	ATLANTIC SALMON - NORWEGIAN IVP SKIN-ON TRIM D FILLET	3/4 LB	1/24 LB	6-8 FILLETS